



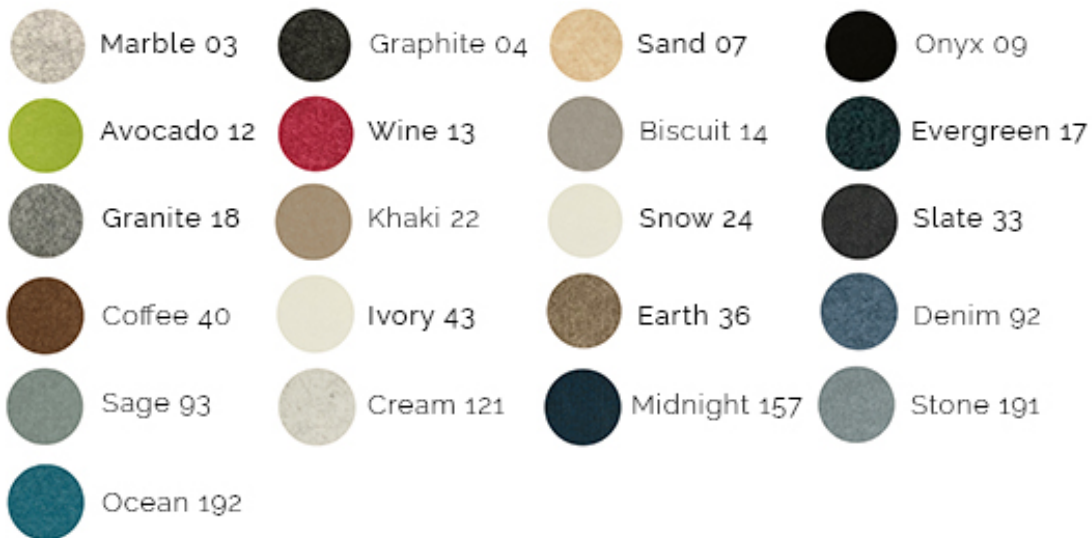
ACOUSTICOR
acoustic panels



ACOUSTICOR acoustic panels

- > 100% polyester fiber acoustic felt —60% recycled PET material/40% virgin material
- > ASTM E 84 A Rating permanently achieved by impregnating virgin material into the panel
- > 21 available colors/Standard- Grd 1
- > 10 available printed textures/Premium
- > thickness: 9mm (3/8") contact us for custom sizes
- > custom digital printed colors and textures available on solid color PET
 - Printed on one side - Grd 2
 - Printed on two sides - Grd 3

Standard Colors- Grd 1



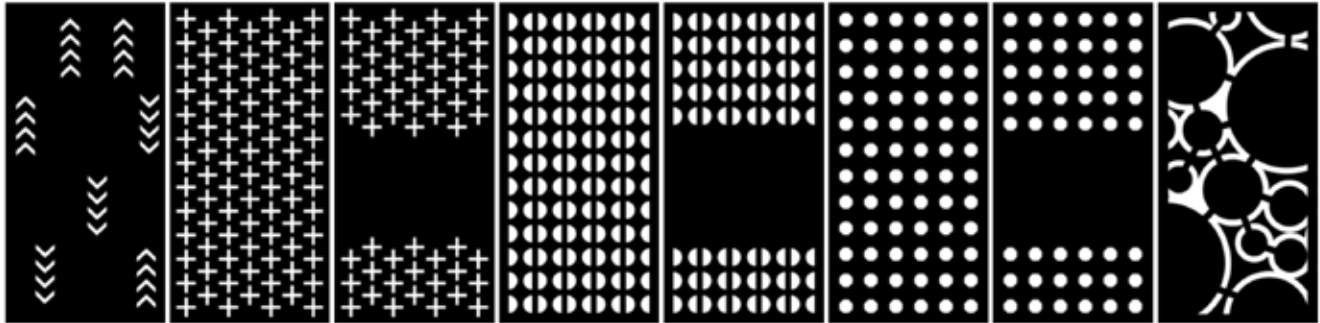
Printed Textures- Premium



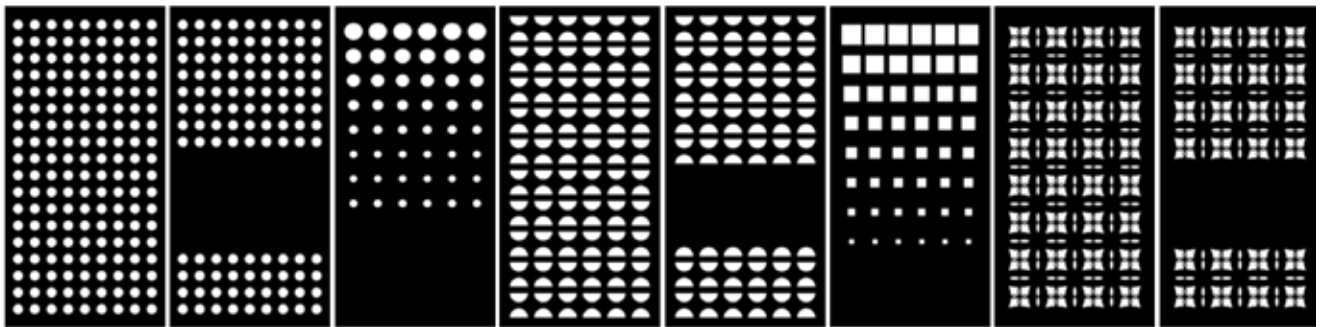
*NOTE: White or Ivory finishes have limited availability based on the application. Please contact Corona Group for more information.
COLORS ARE REPRESENTATIVE.

ACOUSTICOR
acoustic panels

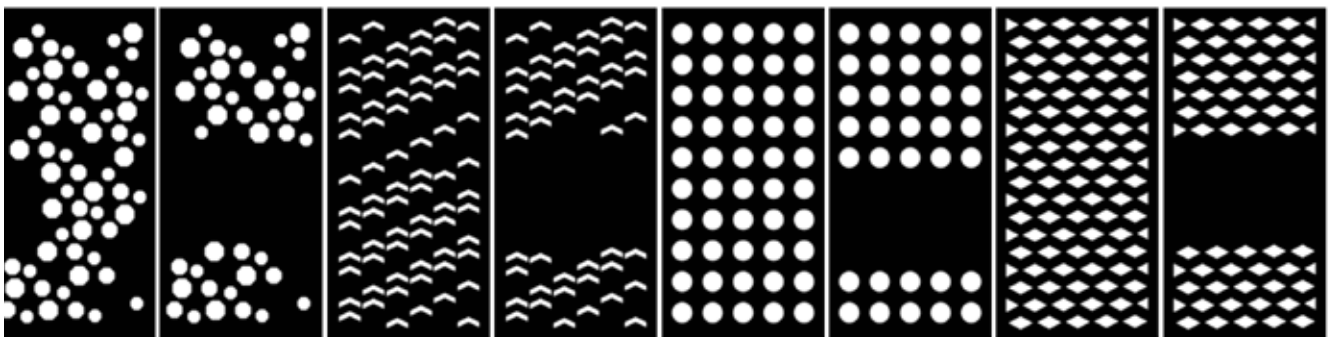
pattern options



Archer Bonus Bonus w/Privacy Chain Chain w/Privacy Connect Connect w/Privacy Cove



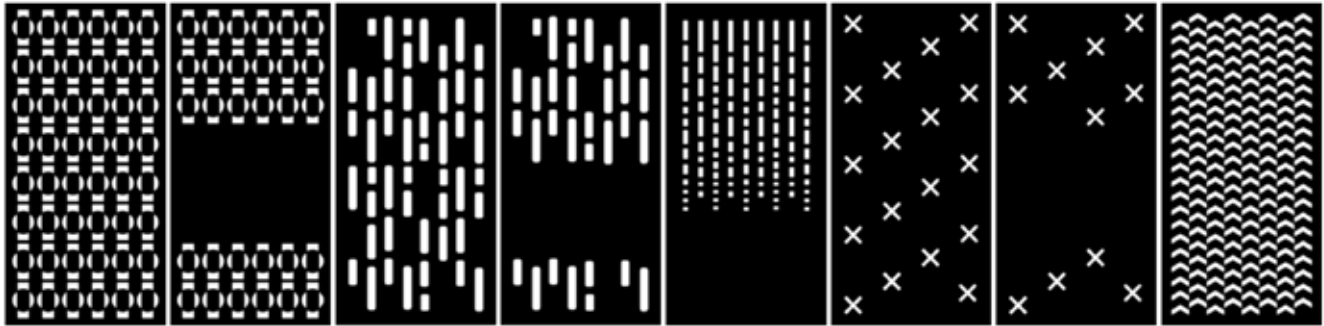
Dots Dots w/Privacy Drizzle Eggshell Eggshell w/Privacy Fade Flight Flight w/Privacy



Float Float w/Privacy Flock Flock w/Privacy Full Circle Full Circle w/Privacy Link Link w/Privacy

ACOUSTICOR
acoustic panels

pattern options



Loom

Loom
w/Privacy

Matrix

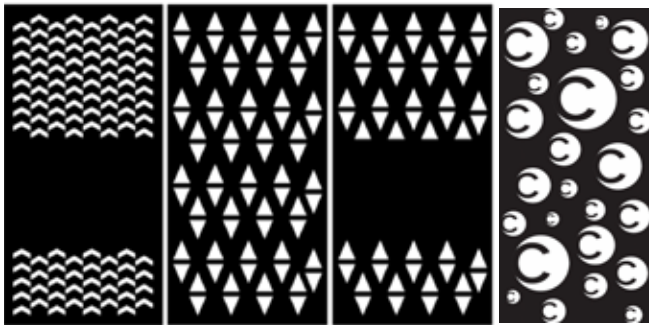
Matrix
w/Privacy

Rainfall

Stitch

Stitch
w/Privacy

True North



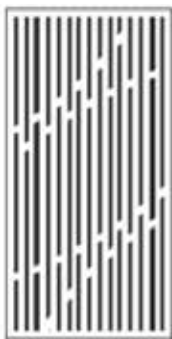
True North
w/Privacy

Up Down

Up Down
w/Privacy

Custom
Designs

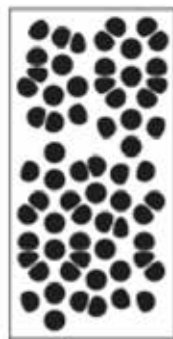
additional pattern options



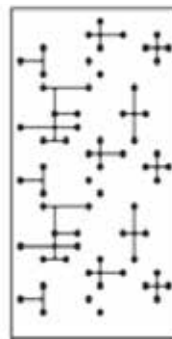
Bande



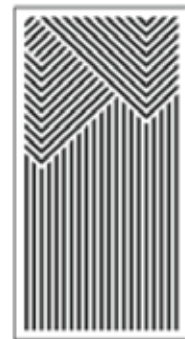
Beaded



Crystyl



DNA



INKA-I

ACOUSTICOR
acoustic panels

additional pattern options



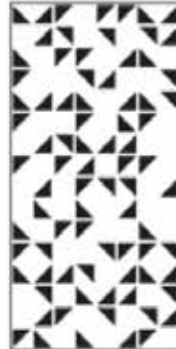
INKA-II



INKA-III



INKA-III



Kyte



Llava-I



Llava-II



Llava-III



Lumin II



Mazon I



Mazon II



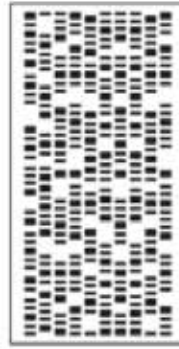
Mazon III



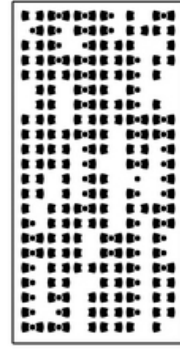
Roseau



Santa Fe



Sequence



Formal

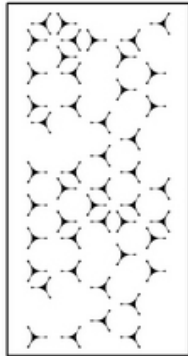
ACOUSTICOR
acoustic panels

additional pattern options

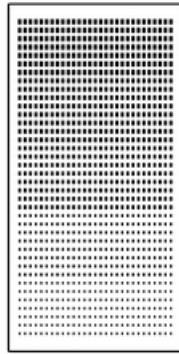
scoring (non-cut-out) options



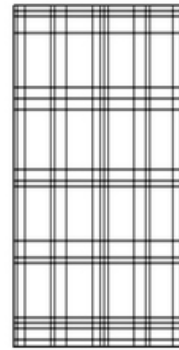
Key



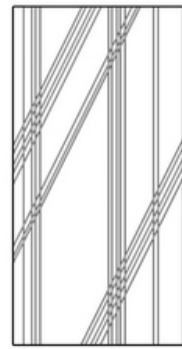
Pinwheel



Sqwee



Tartan



Gruv